

# DPVR-4D Interface Manual Update Instructions

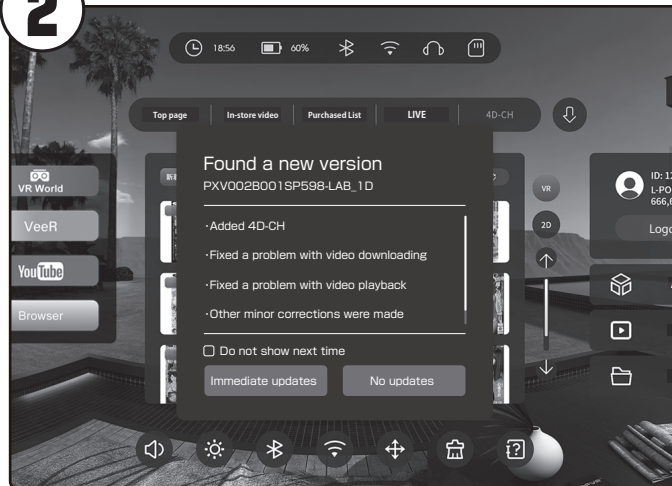
1

New version found

PXV002B001SP598-LAB\_1D

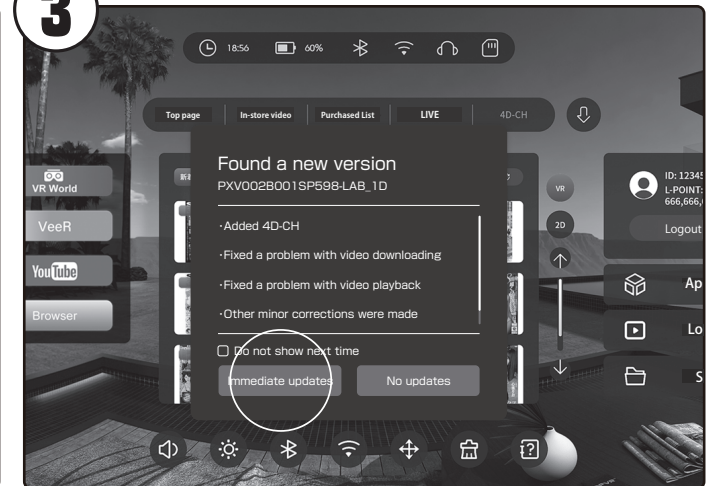
Start the main unit.  
If Wi-Fi was connected before the last time the device was turned off, "New version found" will be displayed immediately after the device is started, with the new version number and update details displayed below it.

2



It may take some time before you receive notification. If you are not connected to Wi-Fi when you start the device, turn it on and you will see "Enter Wi-Fi Settings" on the front of the device. Select it and connect to Wi-Fi to see the update notification.

3



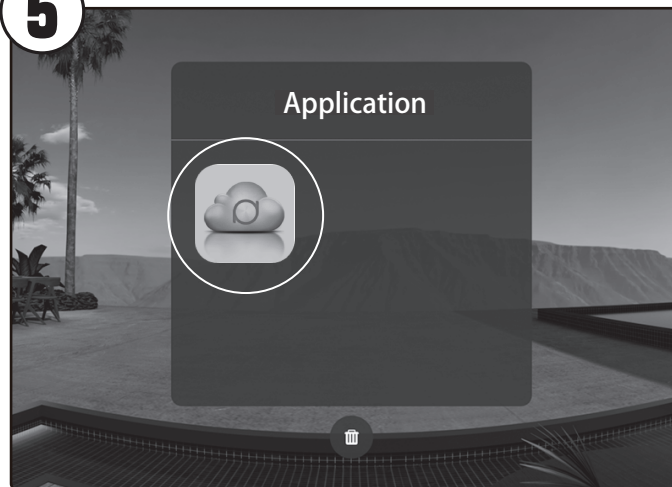
To update, select "Update Immediately".

4

System updates are installed

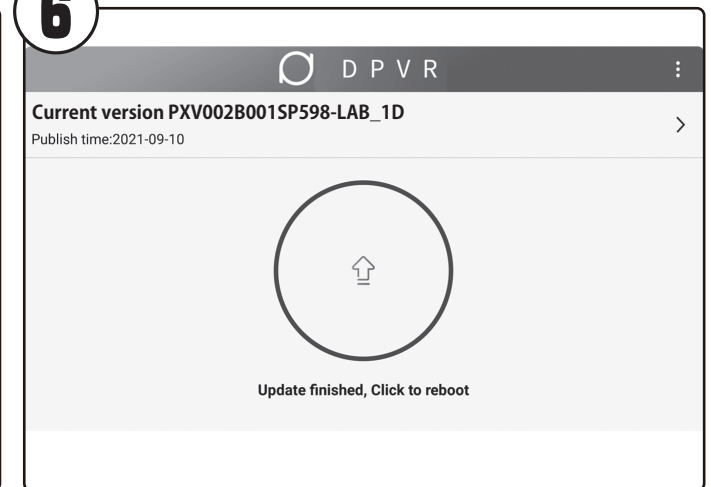
When selected, the screen turns black and the message "System update is being installed" appears, and after a short while, the system automatically starts rebooting.

5



Reboot and when the Home screen appears, select the "Upgrade" application from the list of applications. (If there is a newer version, you will be notified of the new version again, so please follow the procedure from step 1 again.)

6



After the selection is made, the screen will switch to the latest version that was displayed in the update notification, and the update will be successful if the "Current Version" is the latest version that was displayed in the update notification and "Current Latest Version" is displayed at the bottom of the screen.